

PRE-CHECK

1

Only wireless function (Remote control) will not operate.
(If a new transmitter or a transmitter of the same type that works properly with the vehicle is not available.)

Put the vehicle in the following conditions (Pre requisite).

(1) Key plate has not been inserted in the ignition key cylinder.

(2) All the doors are closed. (Door warning light is off.)

(3) All the doors are locked.

Basic function check:

Under the standard operation, when repeating the operation of UNLOCK and LOCK switch 3 times or more alternately, check the UNLOCK-LOCK operation from 3rd time onward.

- Following procedures are standard operation.

(1) Keep about 1 M away in the right direction from the outside handle of a driver's seat.

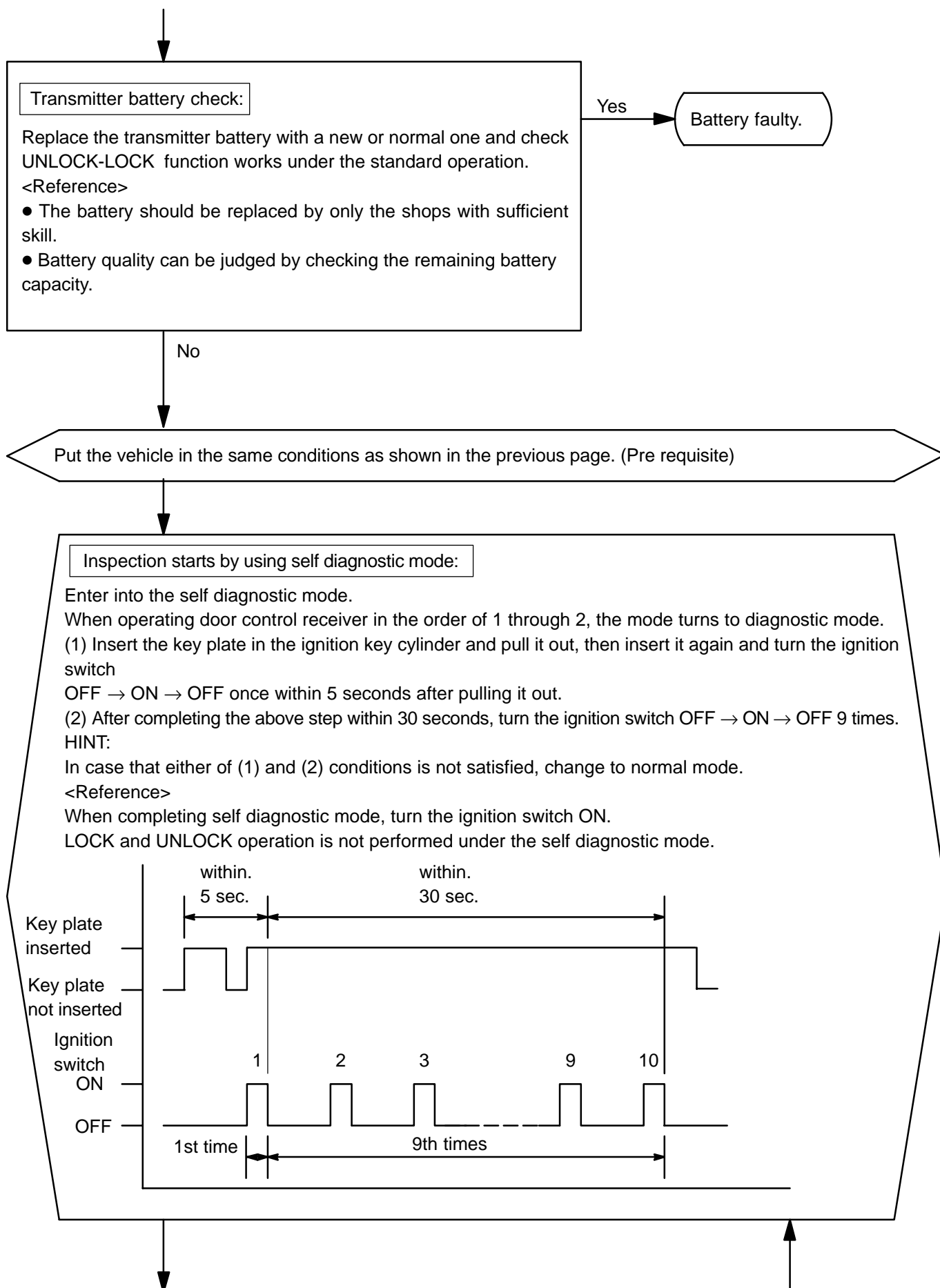
(2) Face the transmitter to the vehicle and press one of transmitter switches for about 1 second

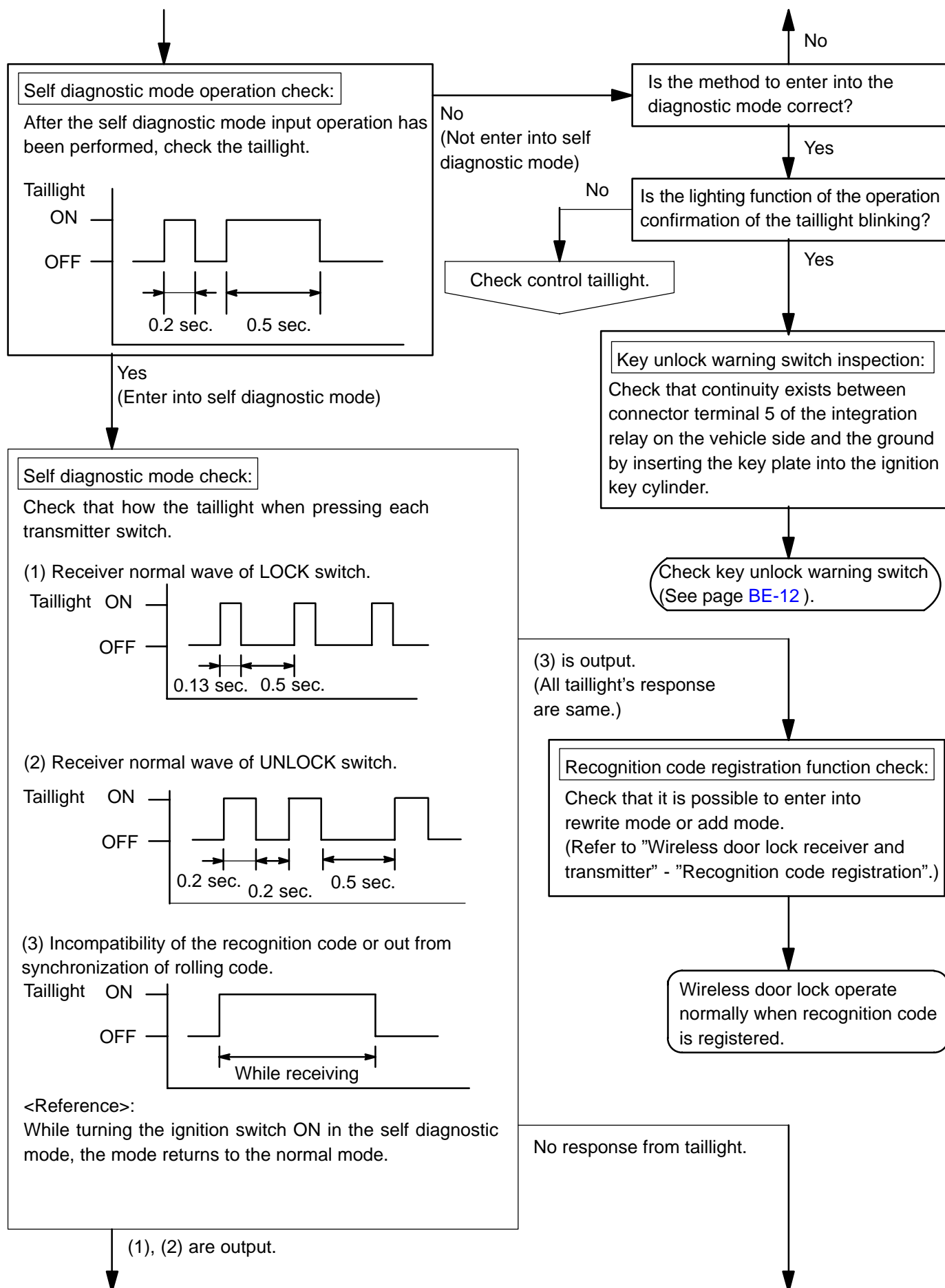
No

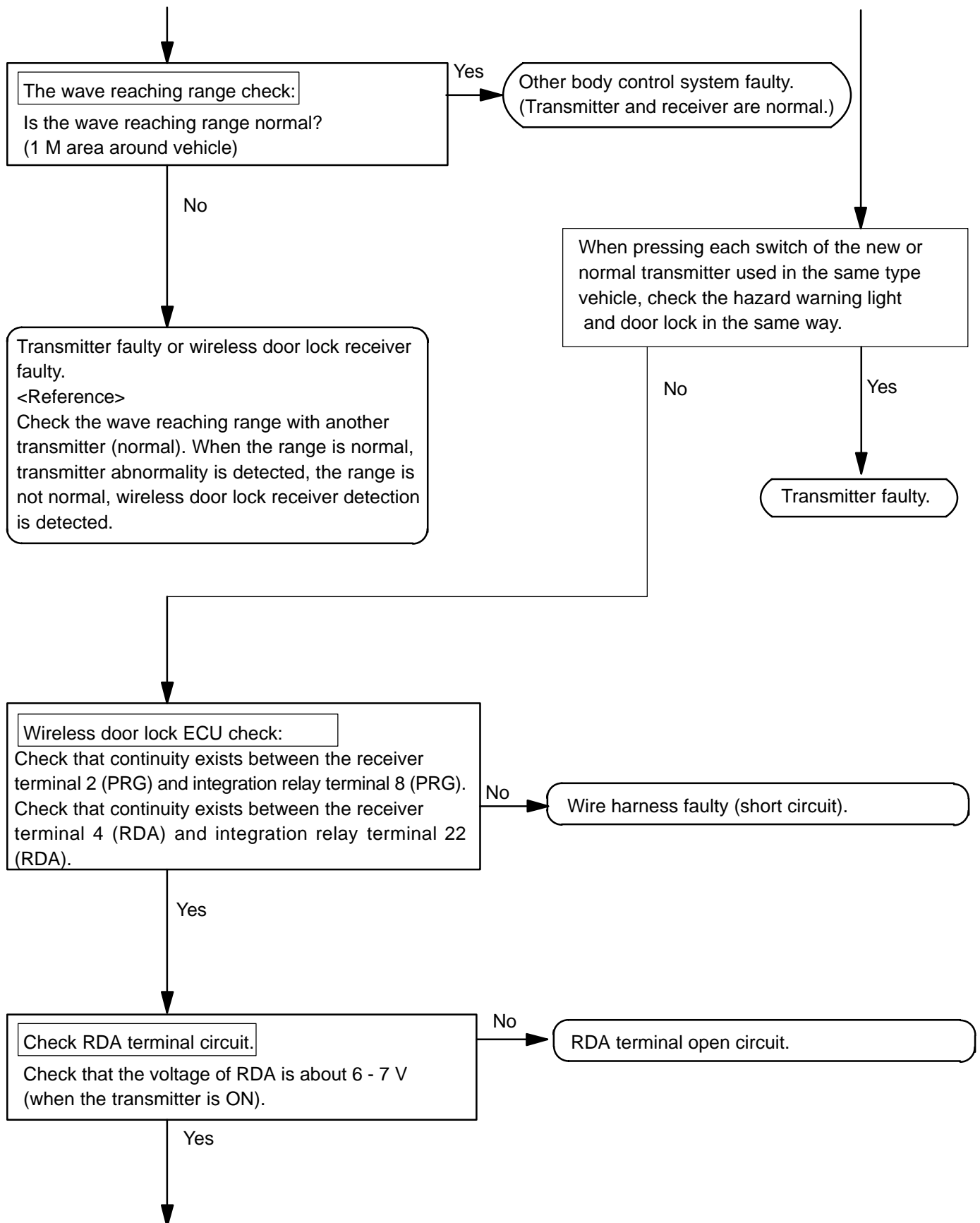
Yes

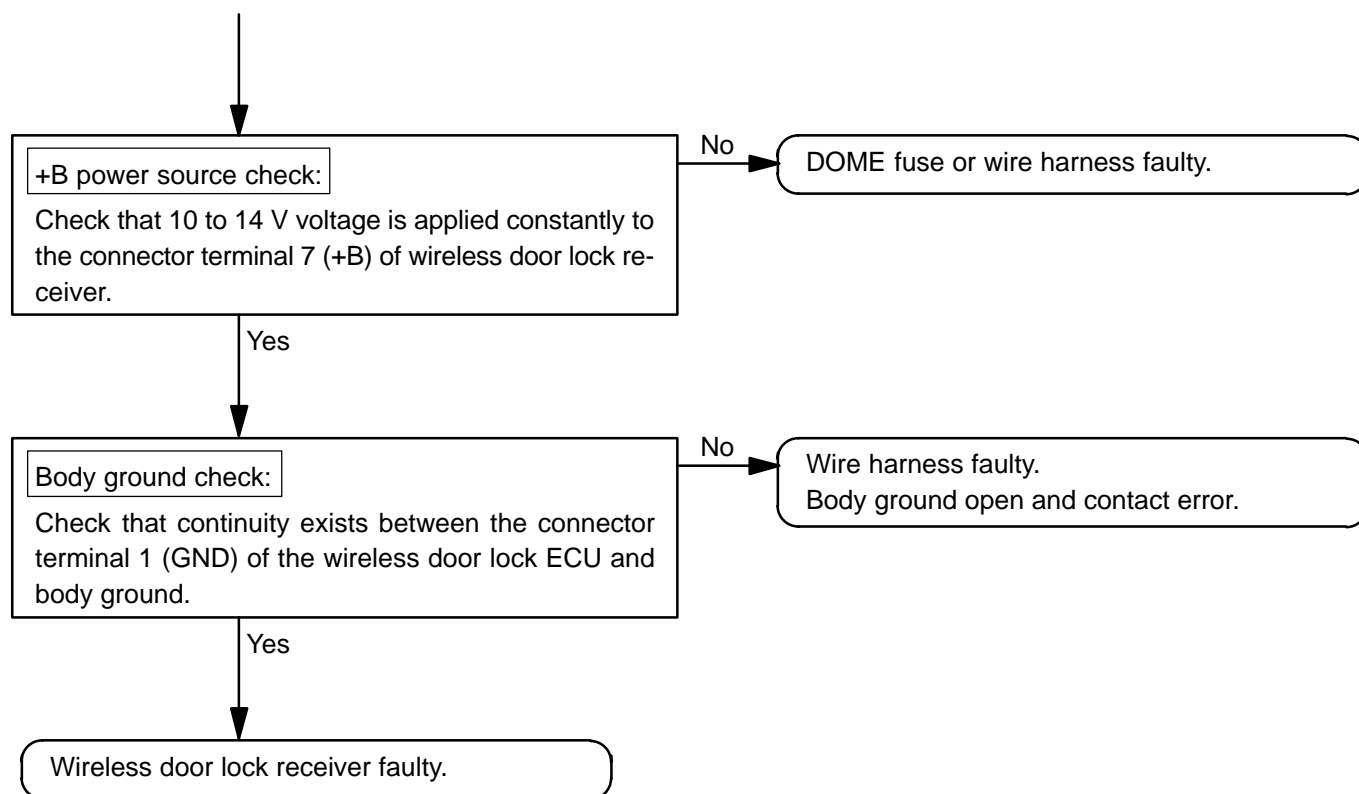
Normal
<Reference>

- Operative distance may differ according to an operator, the way of holding the transmitter or position.
- As weak electric wave is used, when there is strong wave or noise in the used frequency, operation distance might be shortened.









2 Wireless door lock buzzer does not chirp.